

SKYWALL®

MULTIWALL (MW)

Architecture System





Suki Time KBP
5-WALL, CLEAR EMBOSSED



**Creating
New
Ambience**

SUKI TIME



Accosa Terra, ICE
9-WALL WHITE.

SKYWALL

ACCOSSE

**Energy
Saving**

Multi-wall Polycarbonate Architectural System

Table of **CONTENT**

SKYWALL	3
PORTFOLIO GALLERY PROJECTS	4
PRODUCT TYPES	5
PROPERTIES	7
INSTALLATION TYPES	8



SKYWALL MULTI is an advanced multiwall Polycarbonate panel system that combines proven design, light transmission, thermal insulation and strength. It offers a lightweight, leak-proof design that withstands very high loads, and accomodates expansions and contractions. The system's distinct advantages make it ideal for long-term applications on many types of projects.

SKYWALL MULTI panels join together by a polycarbonate or aluminum joiners, which are sealed at the ends by End-Caps. The entire system are clamped into the structure without fasteners penetrating through the panels. Ventilated sealing tape seals at the panel's lower end to prevent dirt from entering the flutes, while also providing sufficient drainage.

SKYWALL MULTI SYSTEM is a perfect solution for all seasons, providing light and energy-saving insulation.

MAIN BENEFIT

- ✓ Withstand very high loads
- ✓ Accomodates expansion & contraction
- ✓ Leak-proof
- ✓ High thermal insulation
- ✓ Ideal for curved designs
- ✓ Double sided UV protection

APPLICATIONS

- ✓ Architectural roofing & glazing
- ✓ Commercial and retail roofing
- ✓ Sports facilities
- ✓ Covered walkways, awnings, & entrances
- ✓ Open markets - light roofing
- ✓ Service stations - translucent roofing
- ✓ Parking structure coverings
- ✓ Swimming pool covers





📍 TwoCents - Bandung
5-WALL EMBOSSED



📍 ELS.ID JOGJA
9-WALL CLEAR EMB.

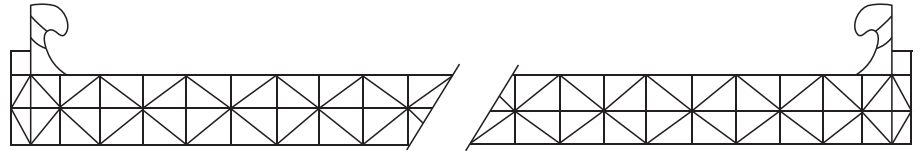


📍 CARLA - PASKAL23
9-WALL CLEAR EMBOSSED

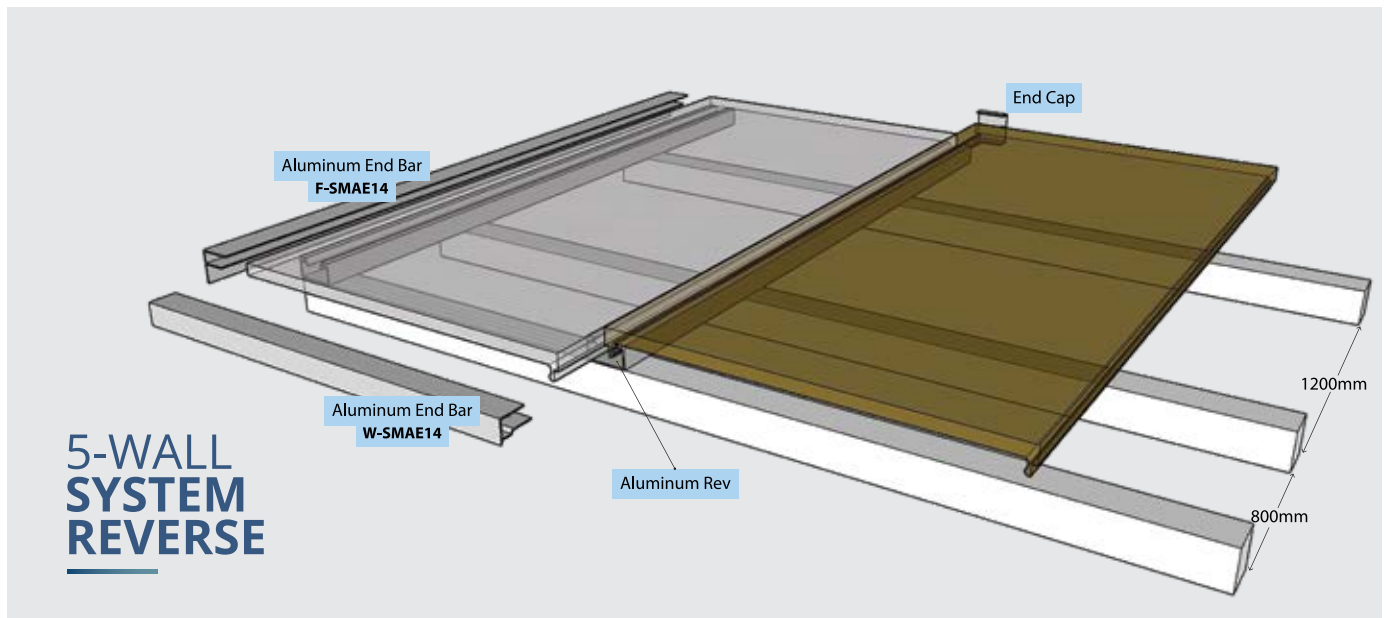
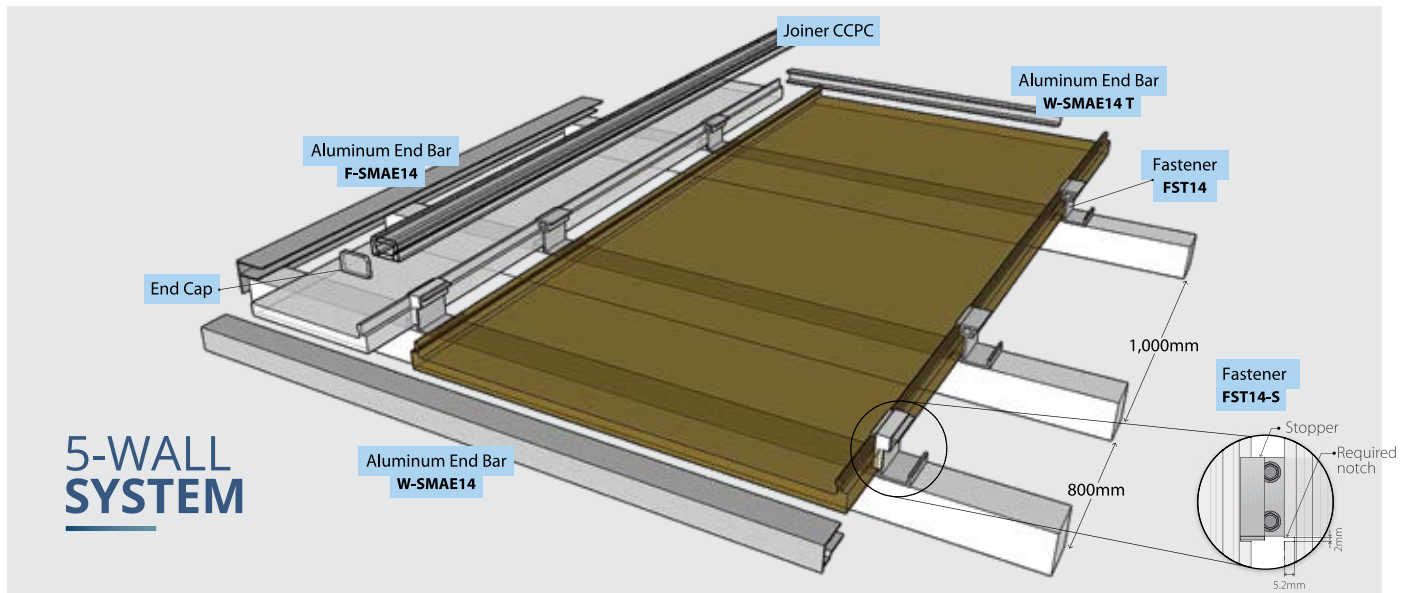
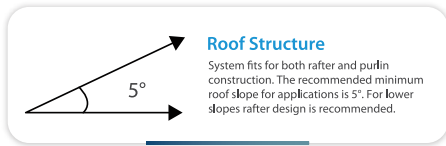
5-W

Size: 14mm x 1040mm
 L: 4.0M | 6M | 8M | Custom
 Weight: 2.7 kg/m²
 Min. Bend Radius: 5,600mm

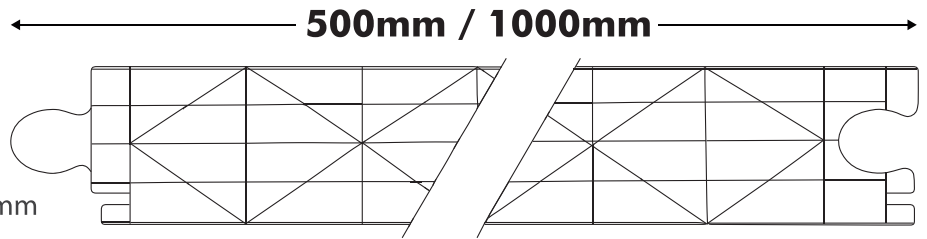
1040mm



COLOR VARIANT

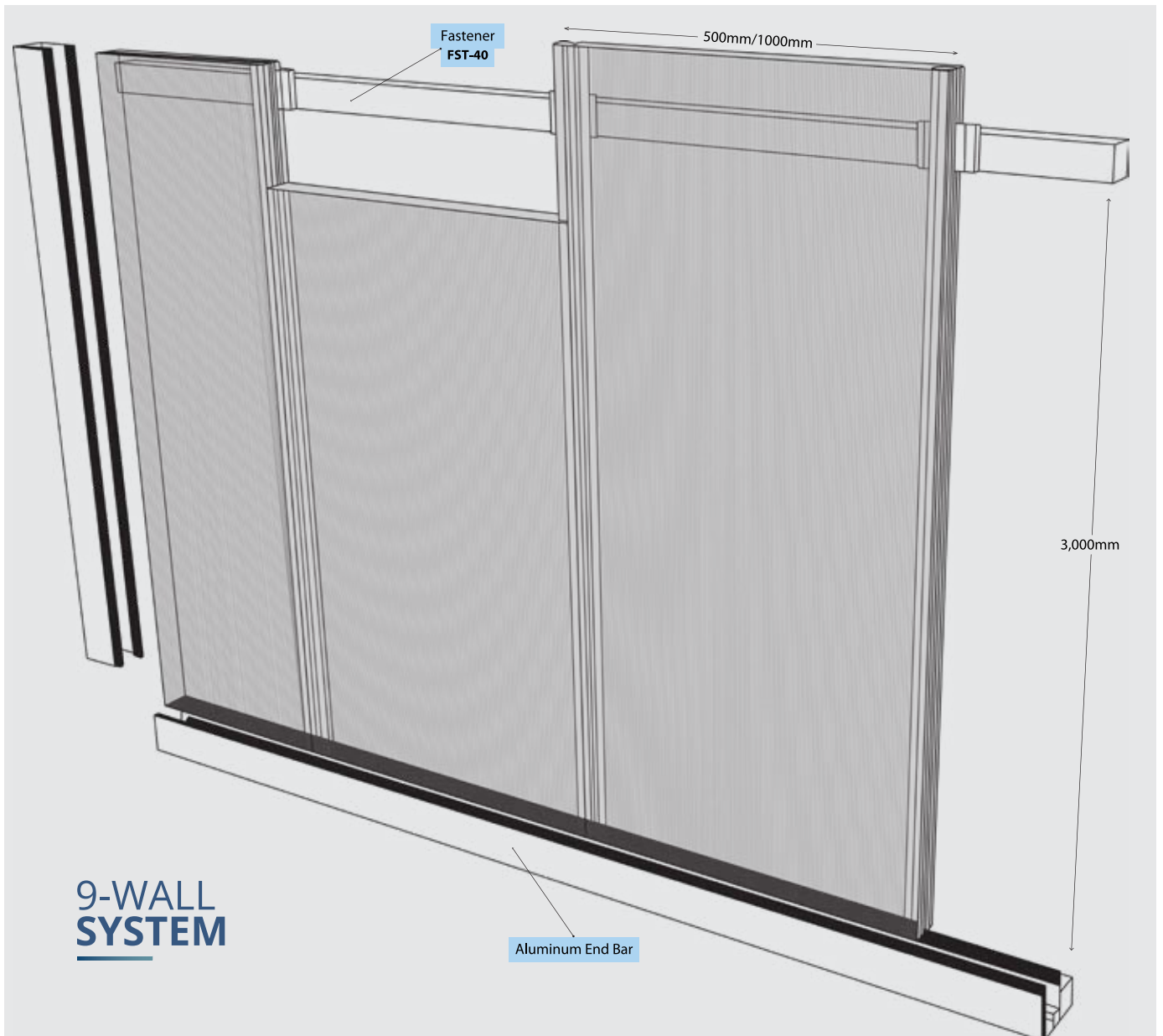


9-W



Size: 40mm x 500mm | 40mm x 1000mm
Length: 4.0M | 6M | 8M | Custom
Weight: 4.1 kg/m²

COLOR VARIANT



**9-WALL
SYSTEM**

Property	Method*	Conditions	Units	Value
Density	D-792		g/cm ³	1.2
Heat deflection temperature (HDT)	D-648	Load: 1.82 MP	°C	128
Coefficient of linear thermal expansion	D-696		cm/cm °C	6.5 x 10 ⁻⁵
Tensile strength at yield	D-638	10 mm/min	MPa	63
Transmittance	D-638		%	63
Shading coefficient			Low-E	0.6
Infrared transmittance			Low-E	<10

*ASTM method except where noted otherwise

Thermal Insulation

Type	Light Transmission [%] - Clear	U-Value [Watts /m ² .°C]	Sound Reduction [dB]
Glass	99	5.90	-
5-wall	69	2.15	20
9-wall	58	1.41	25

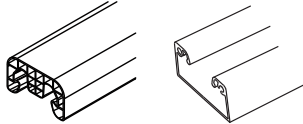
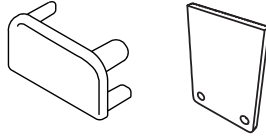
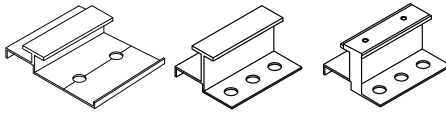
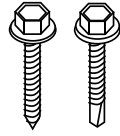
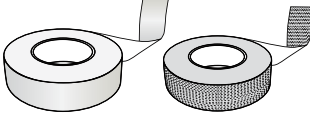
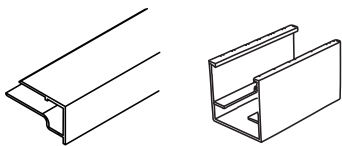
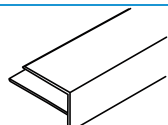
Flammability

Standard
BI (GB8624-2012)
- B (EN13501)

*Depends on panel thickness.

Flammability classification appears in the attached table, based on a test performed by certified independent laboratories.

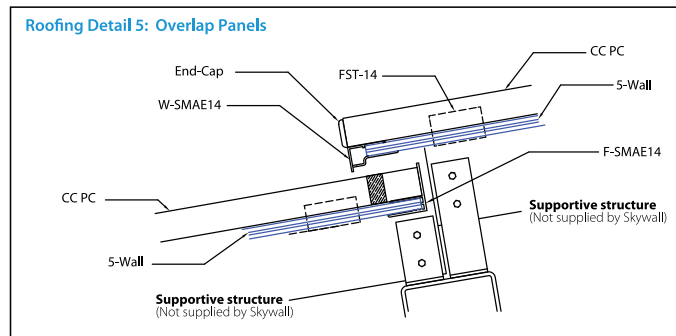
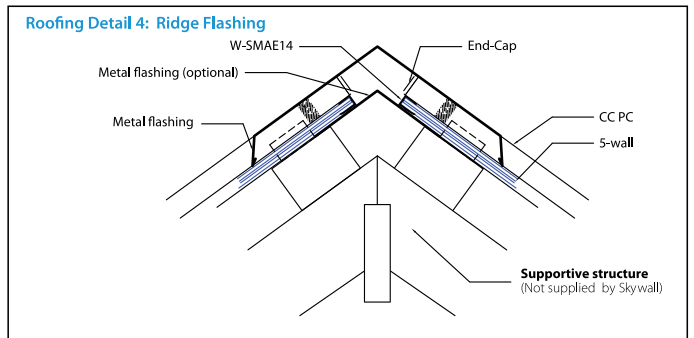
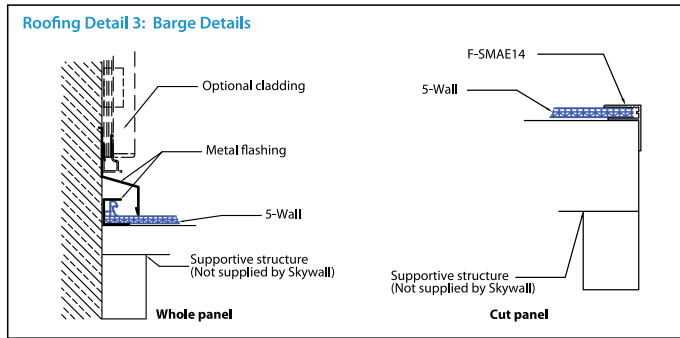
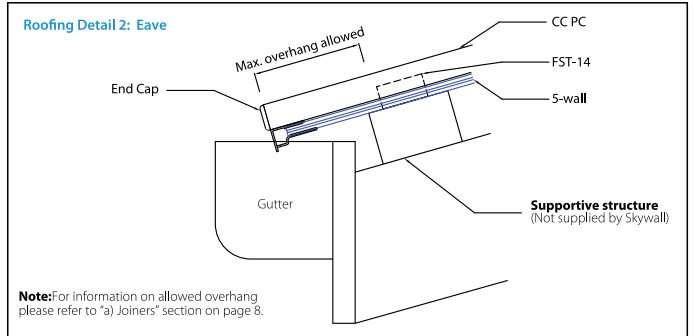
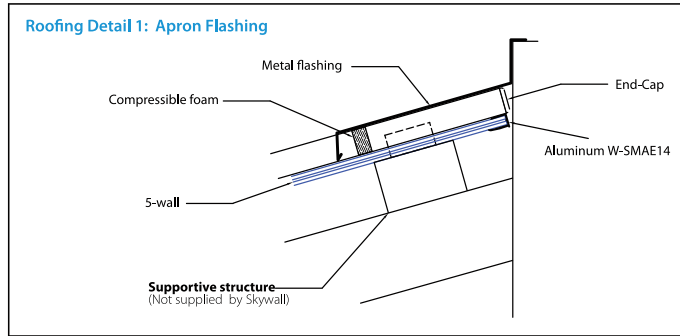
System Components

Component	Part No. (Type)	Drawing	Suppliance Data
CC PC & Aluminum			Length: 6m, 8m (cc pc only)
PC End-Cap & End-Cap for Aluminum Joiner			
T-Fastener 14mm & 40mm FST-14 / FST-40			
Screw Hex-head screw			
Aluminium (Solid) Tape / Breather (Ventilated) Tape			
Aluminum End Bar W-SMAE14 / W-SMAE40	(14mm) (40mm)		Length: 6.0m
Aluminum F-Profile F-SMAE14	-		-

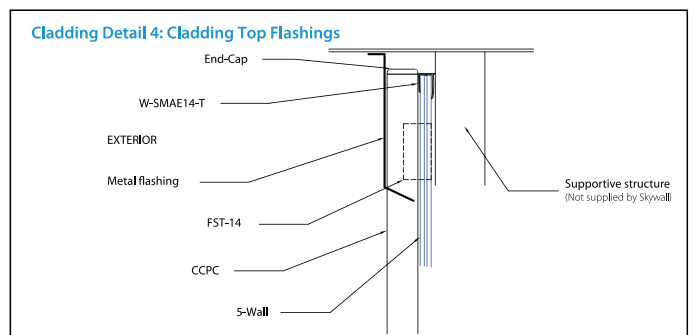
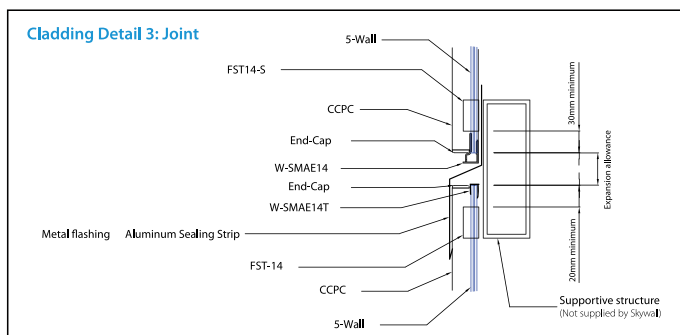
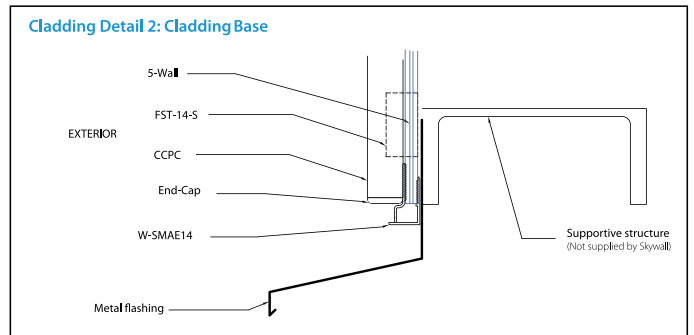
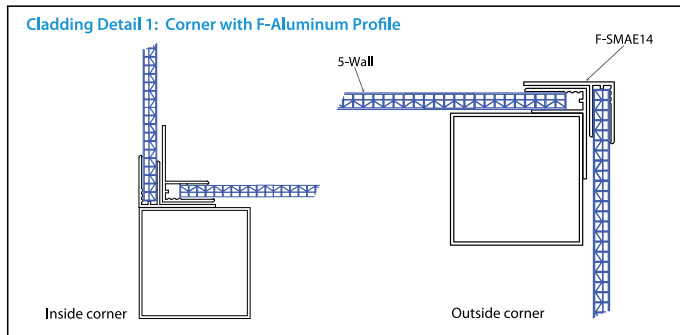
TYPICAL INSTALLATION DETAILS

For 5-WALL

ROOFING



CLADDING





POTATO HEAD, TABANAN
7-WALL SMOG BLUE



BIRD'S NEST FACTOR, TANGERANG
9-WALL CLEAR EMB.



SKYWALL®




SKYWALL®

More Information
CONTACT US

 +62 81 224 224 116

 skywall.id

 [skywall_id](https://www.instagram.com/skywall_id)

 cs@skywall.id